

529 BROOME STREET



SULLIVAN THOMPSON HISTORIC DISTRICT
Broome St

NO PARKING
8am - 6pm
Except Sunday



Bison

DETAILS

529 Broome Street



SIZE
2400 SF Ground Floor

RENT
Upon Request

CROSS STREETS
Corner of 6th Avenue & Broome Street

FRONTAGE
80 Feet of Wraparound Frontage

TRANSPORATION



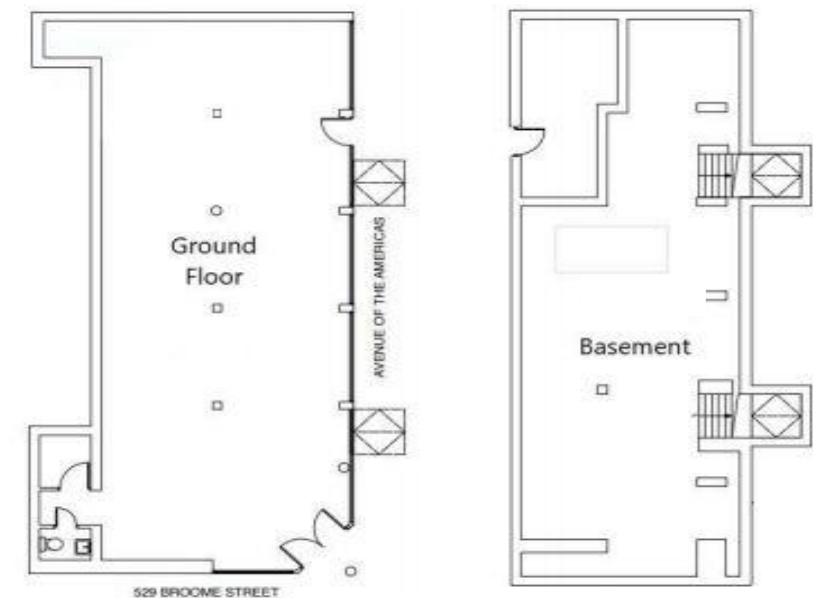
STORAGE
2400 SF Basement

CEILING HEIGHT
9 Feet

AVAILABILITY
Immediate

TERM
Negotiable

FLOORPLANS



COMMENTS

Prime SoHo Corner
Heavy Foot Traffic
Venting in Place
Newly White Boxed
All Uses Considered

NEIGHBORS

Hirohisa
Pera Soho
Pi Bakerie
Rice Kitchen
Aquagrill

