

224

WEST 35TH STREET

[Between 7th Avenue & 8th Avenue]



PRIME RETAIL LOCATION STEPS AWAY FROM PENN STATION

SIZE

Ground Floor	3000 SF
Lower Level	3250 SF
Mezzanine	1000 SF

RENT

Upon Request

CEILING HEIGHT

16 Feet

PPSF

Upon Request

AVAILABILITY

Immediate

FRONTAGE

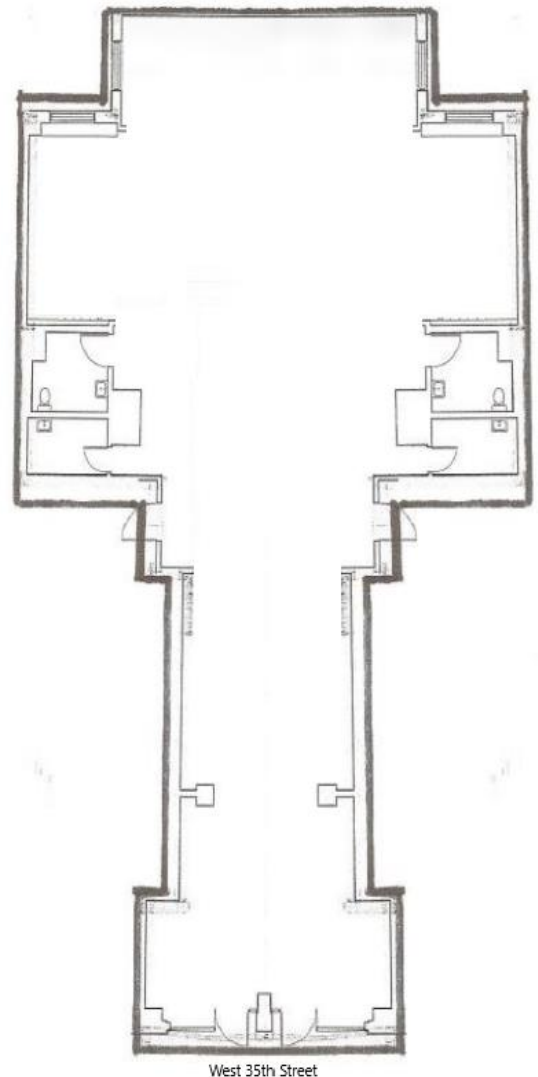
24 Feet

TERM

Negotiable

SPECS

- Prime Garment District Food Spot
- Next Door to 600 Room Marriott Hotel
- 1 Block from Penn Station, MSG and Macy's
- 3,250 SF Legal Lower Level
- 1000 SF Office or Prep Mezzanine
- Fully Vented Premises with Hood in Place
- HVAC Installed
- Sprinklers in Place
- Formally a Pizza Restaurant
- To Be Delivered Vacant
- Available Immediately
- All Food Uses Considered



CONTACT

Aaron Aziz

Principal Broker

516.355.8018

aaron@aranyc.com

James Bullaro

Director

917.270.8360

james@aranyc.com



ARA

Avenue Realty Advisors

INTERIOR PHOTOS

